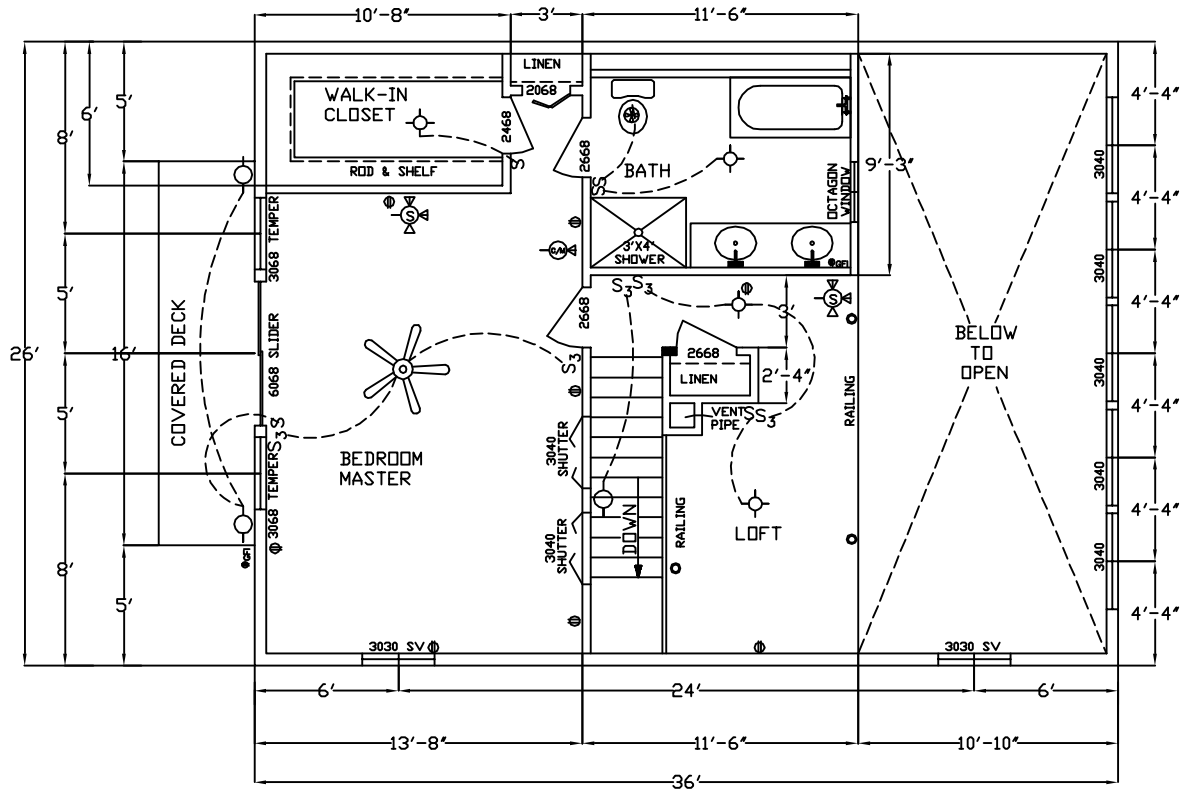
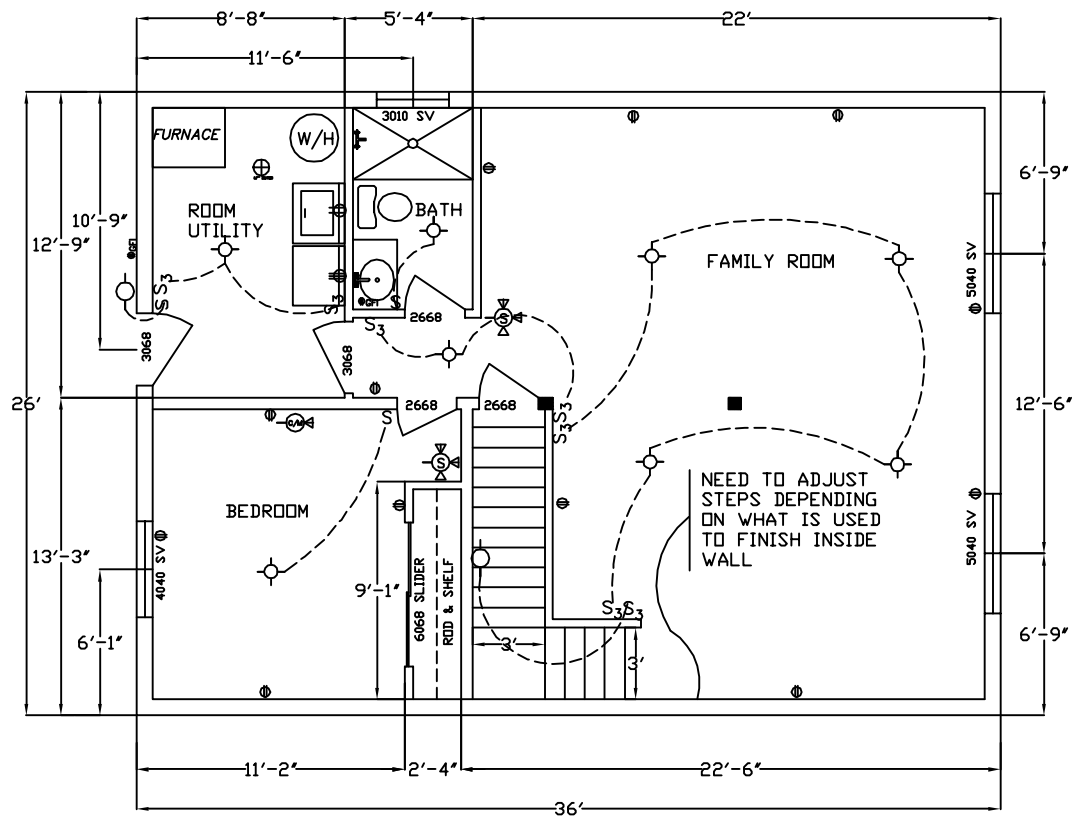


MAIN FLOOR PLAN
936 SQ. FT.

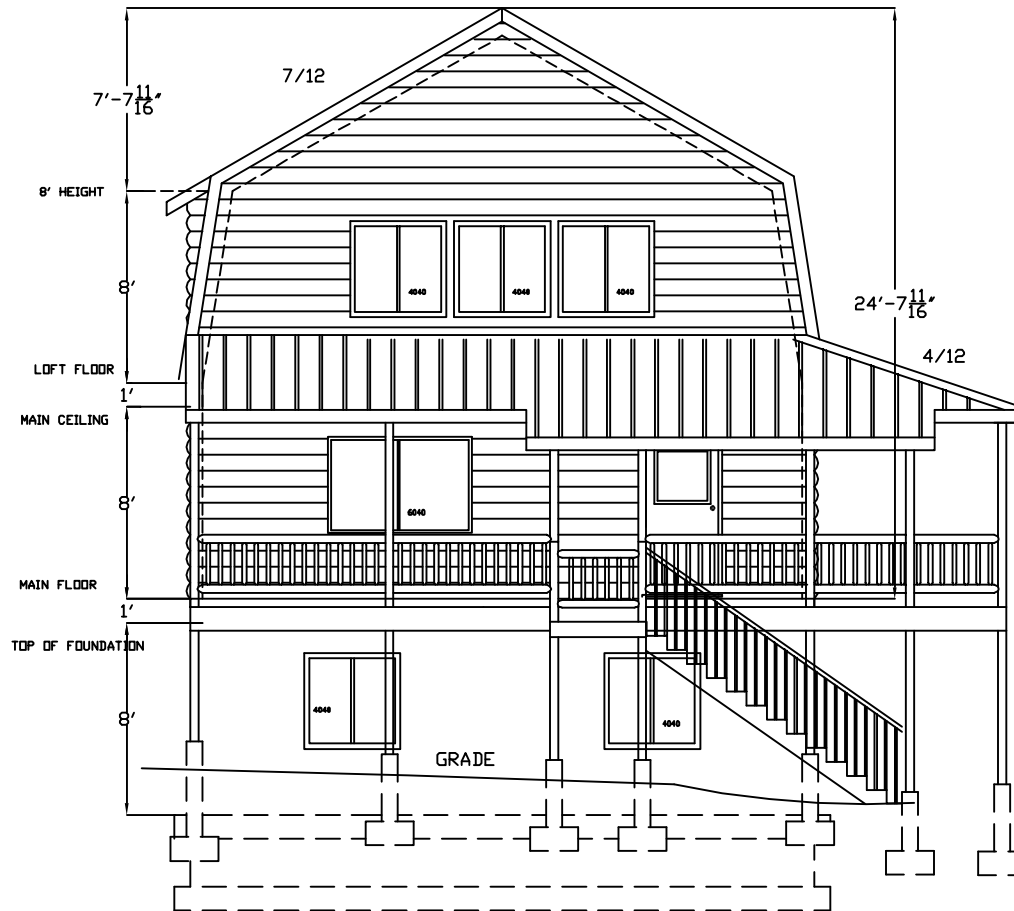


LOFT FLOOR PLAN
 655 SQ. FT.



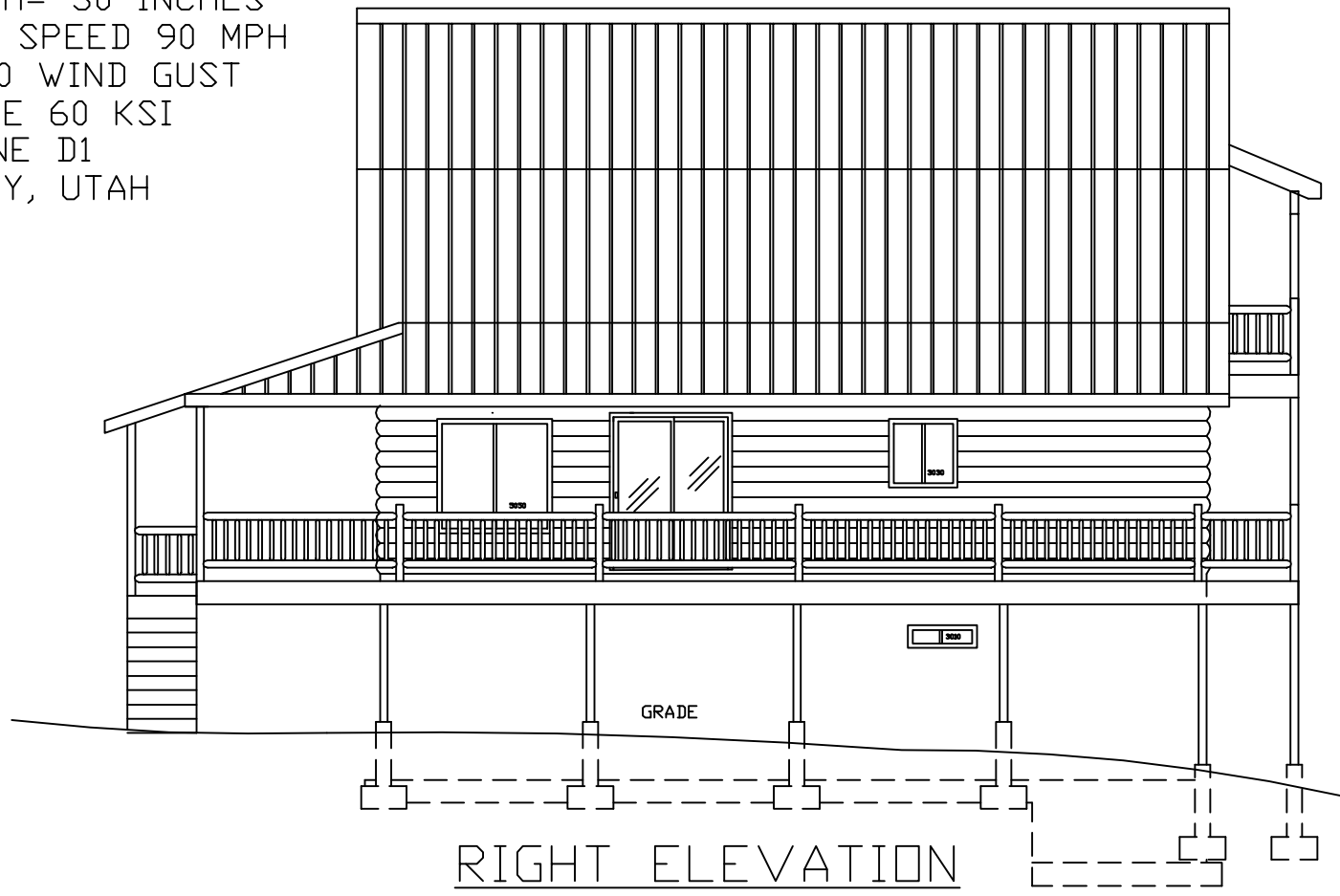
BASEMENT FLOOR PLAN

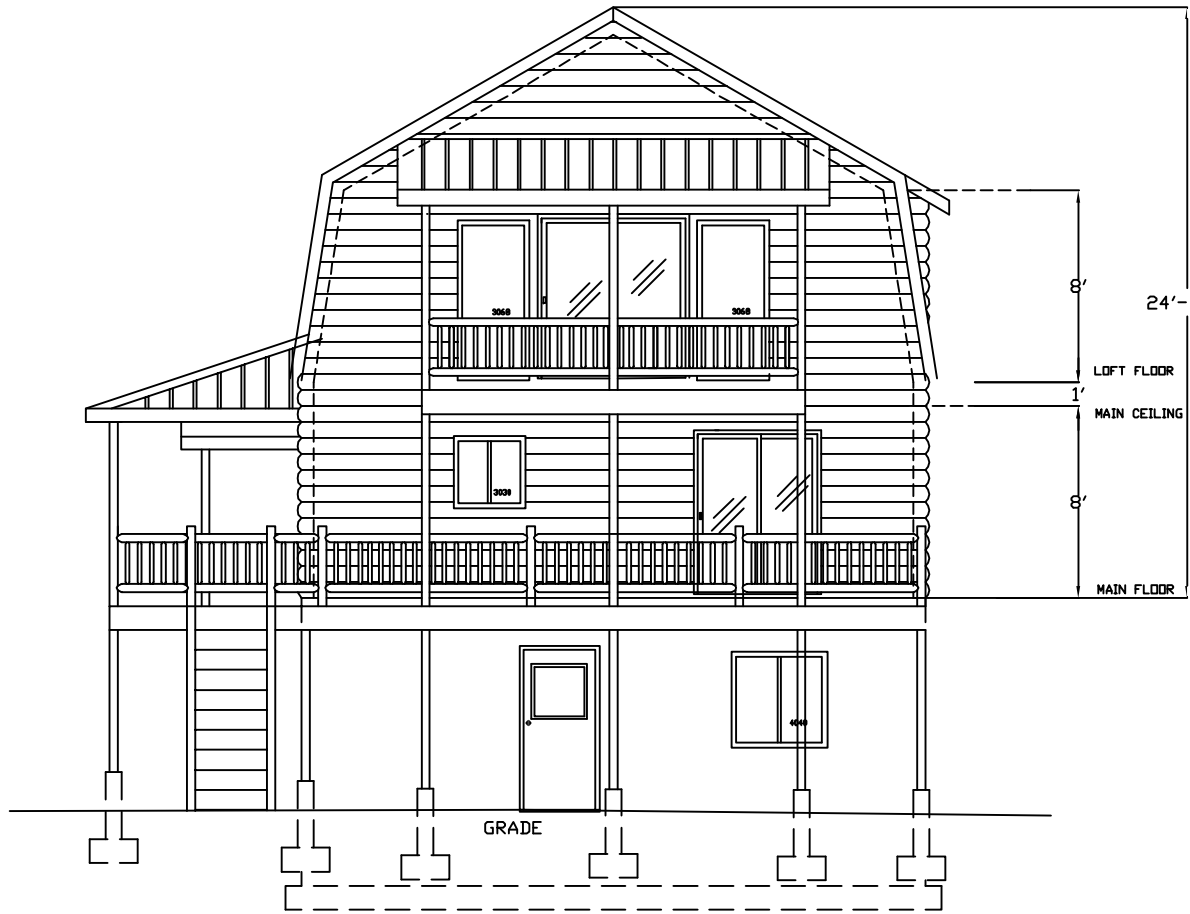
936 SQ. FT.



FRONT ELEVATION

SNOW LOAD REQ'D= 180 PSF
FROST DEPTH= 30 INCHES
BASIC WIND SPEED 90 MPH
W/3 SEC 110 WIND GUST
STEEL GRADE 60 KSI
SEISMIC ZONE D1
KANE COUNTY, UTAH





REAR ELEVATION