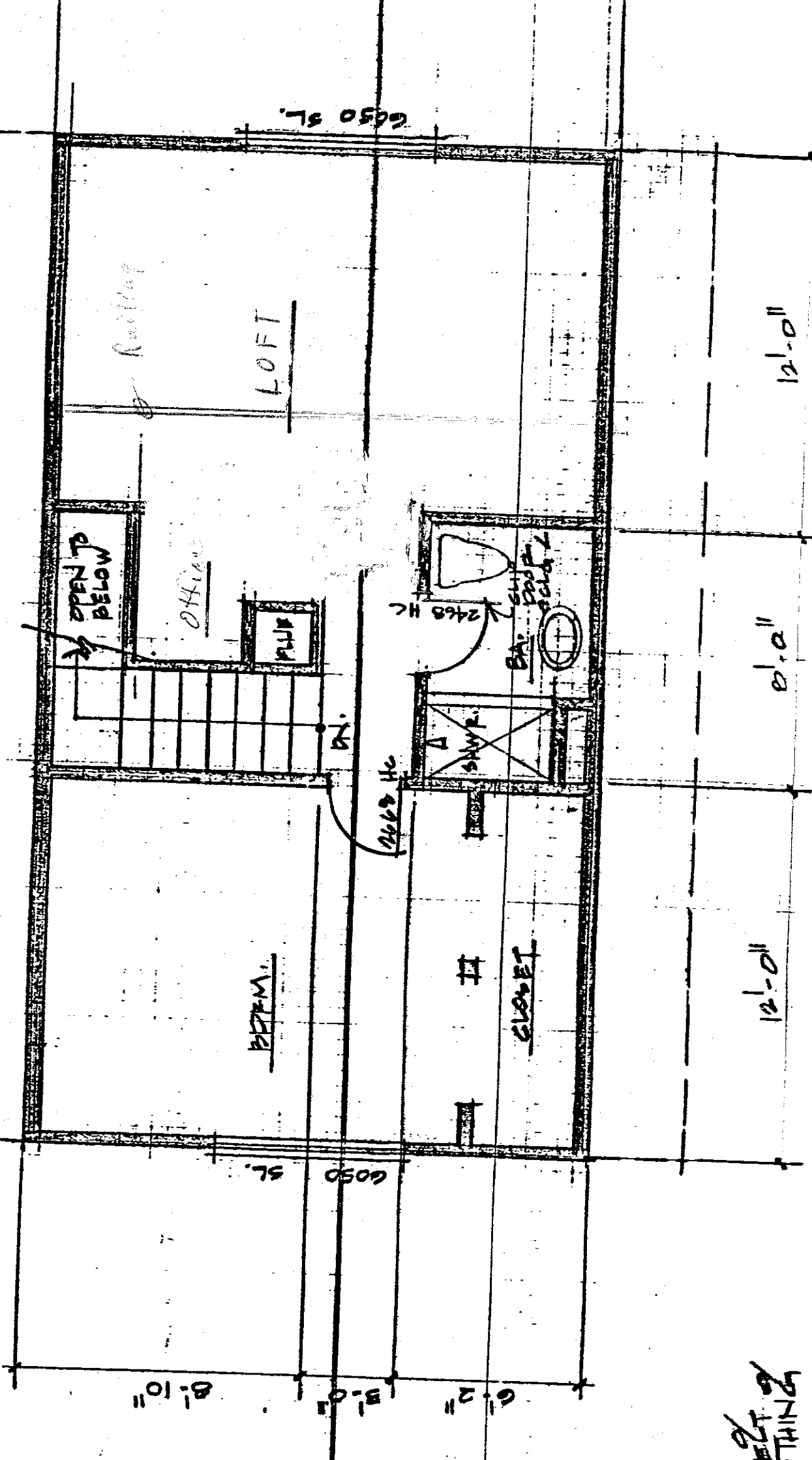


12'-0"

LINE OF FLOOR BELOW



6'50 SL

LOFT

Railing

OPEN TO BELOW

OFFICE

BR

2468 HC

BA. SHOWER TOILET

2468 HC

SHWR

BEEM.

#

CLOSET

6'50 SL

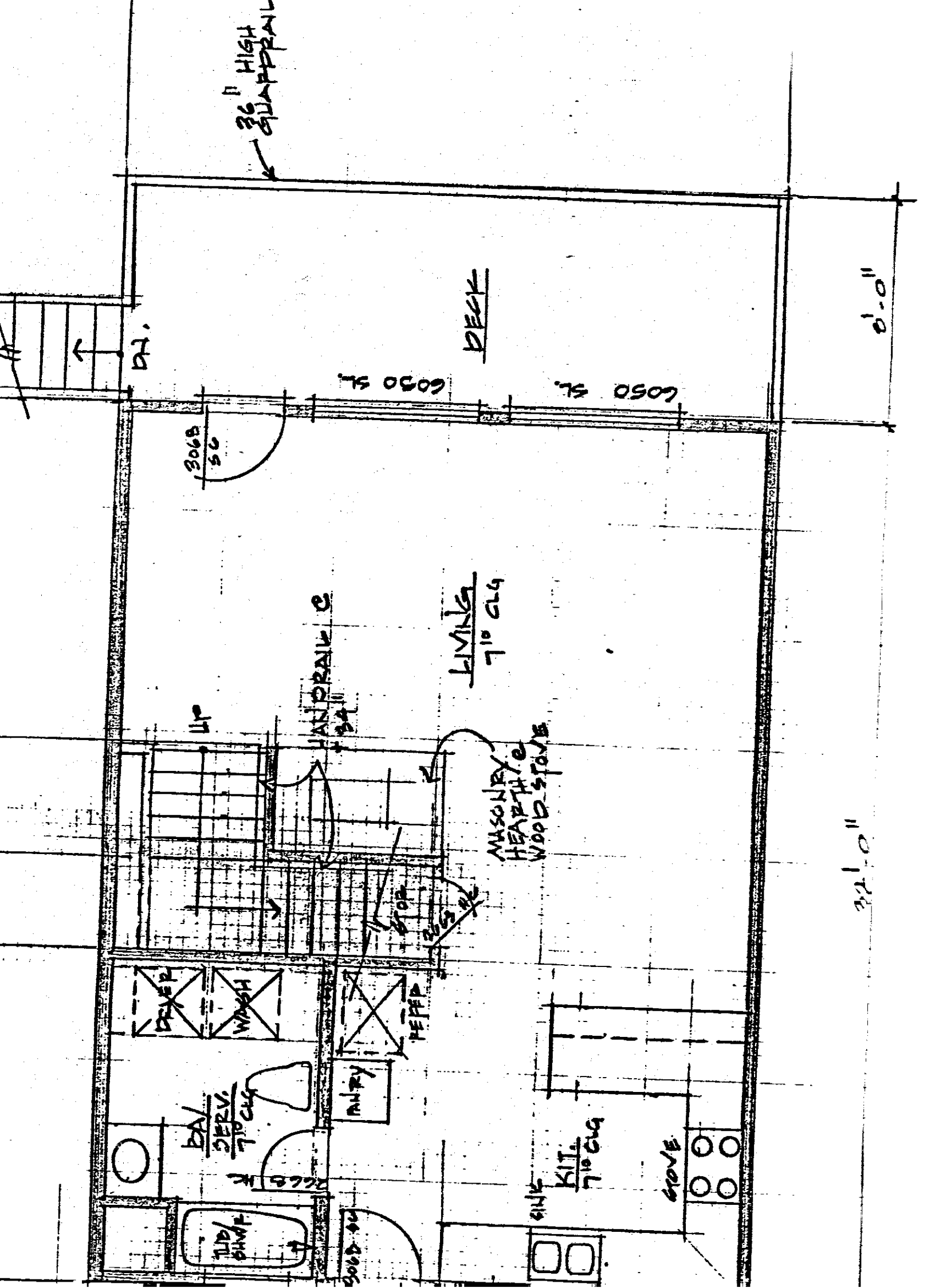
6'-2" 5'-0" 8'-10"

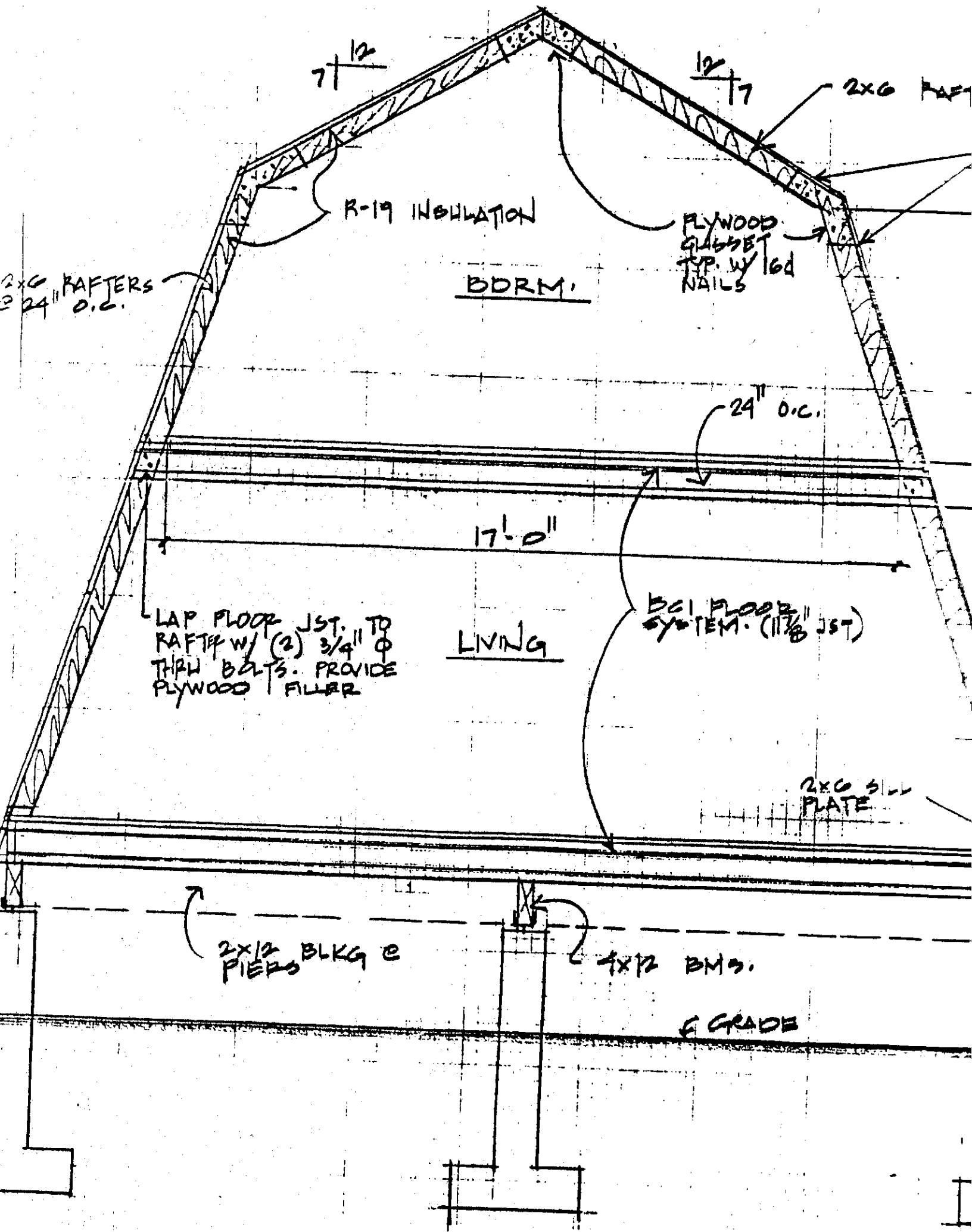
12'-0"

9'-2"

12'-0"

2nd FLOOR





7' 12"

12' 7"

2x6 RAFTERS

R-19 INSULATION

PLYWOOD GABLET TOP. W/ 16d NAILS

DORM.

2x6 RAFTERS @ 24" O.C.

24" O.C.

17'-0"

LIVING

BCI FLOOR SYSTEM (1 1/8" JOIST)

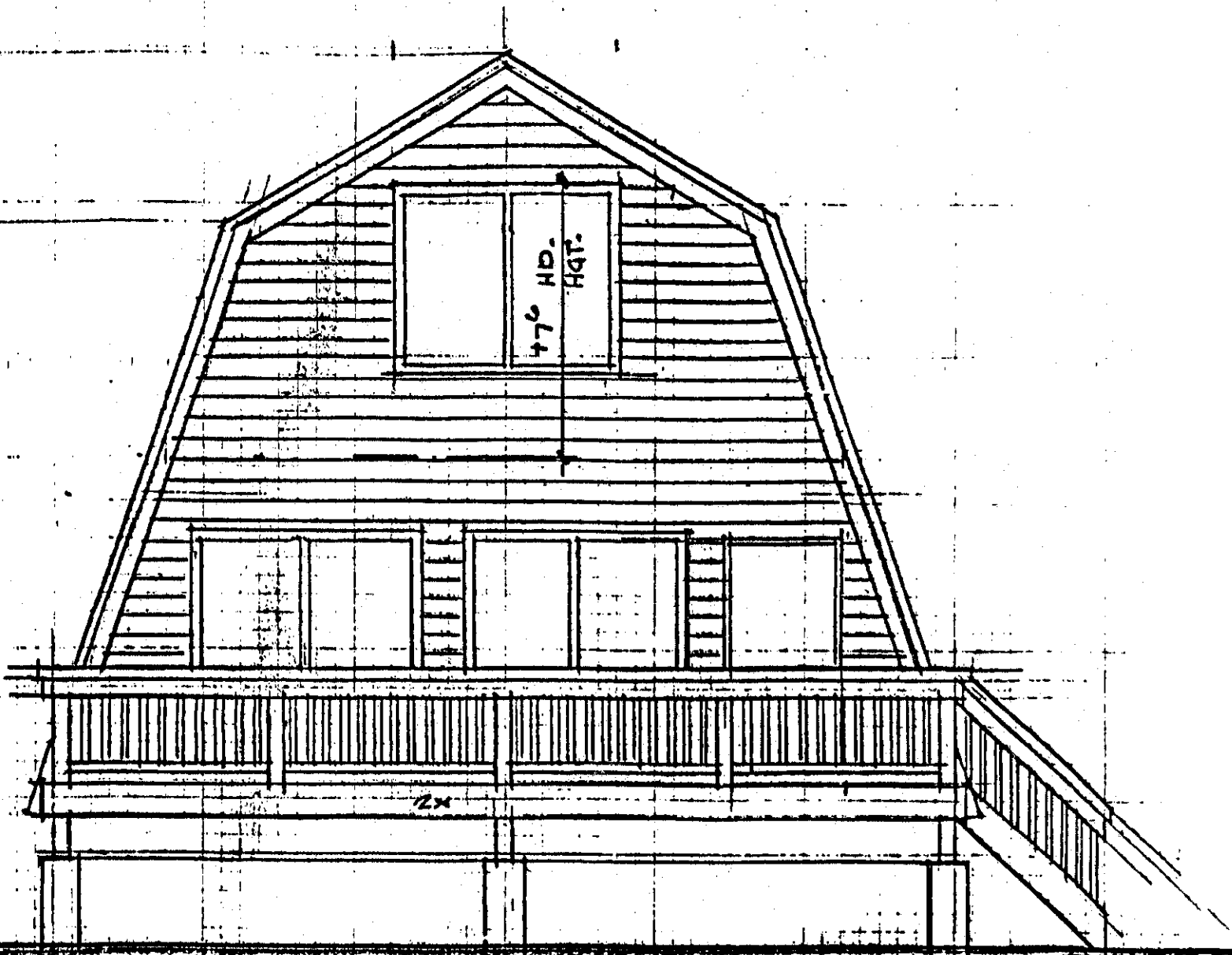
LAP FLOOR JOIST TO RAFTER W/ (2) 3/4" Ø THRU BOLTS. PROVIDE PLYWOOD FILLER

2x6 SILL PLATE

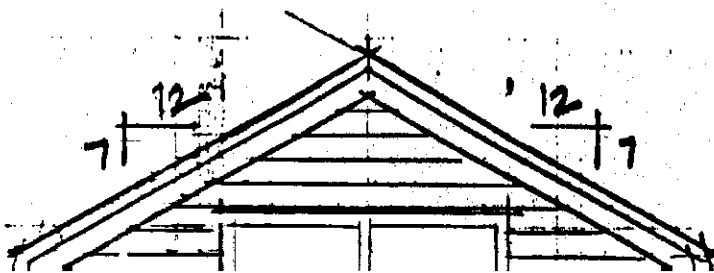
2x12 PIERS BLKG @

4x12 BMS.

G GRADE



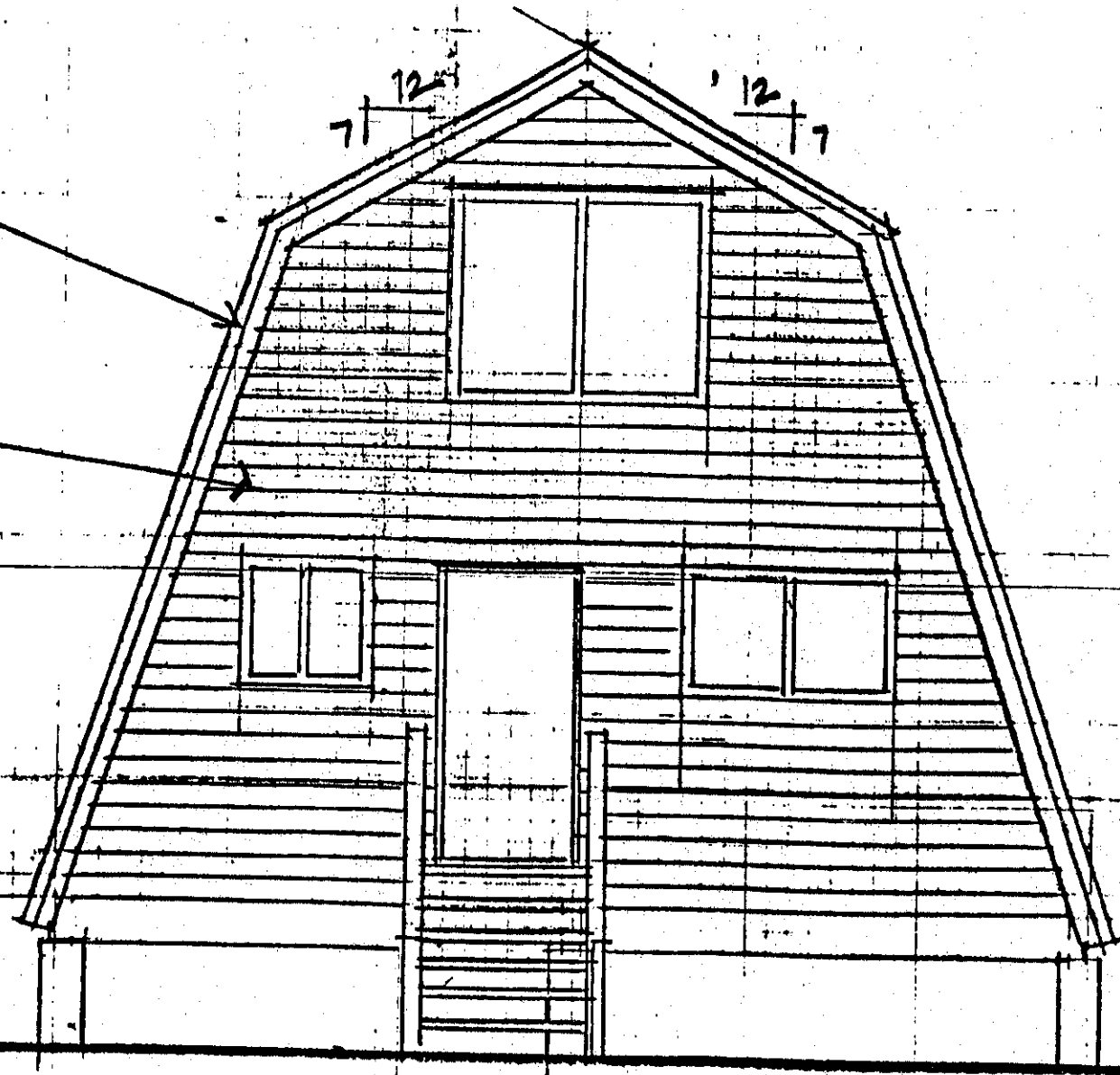
FRONT ELEV.



FRONT ELEVATION

SHALL
OF

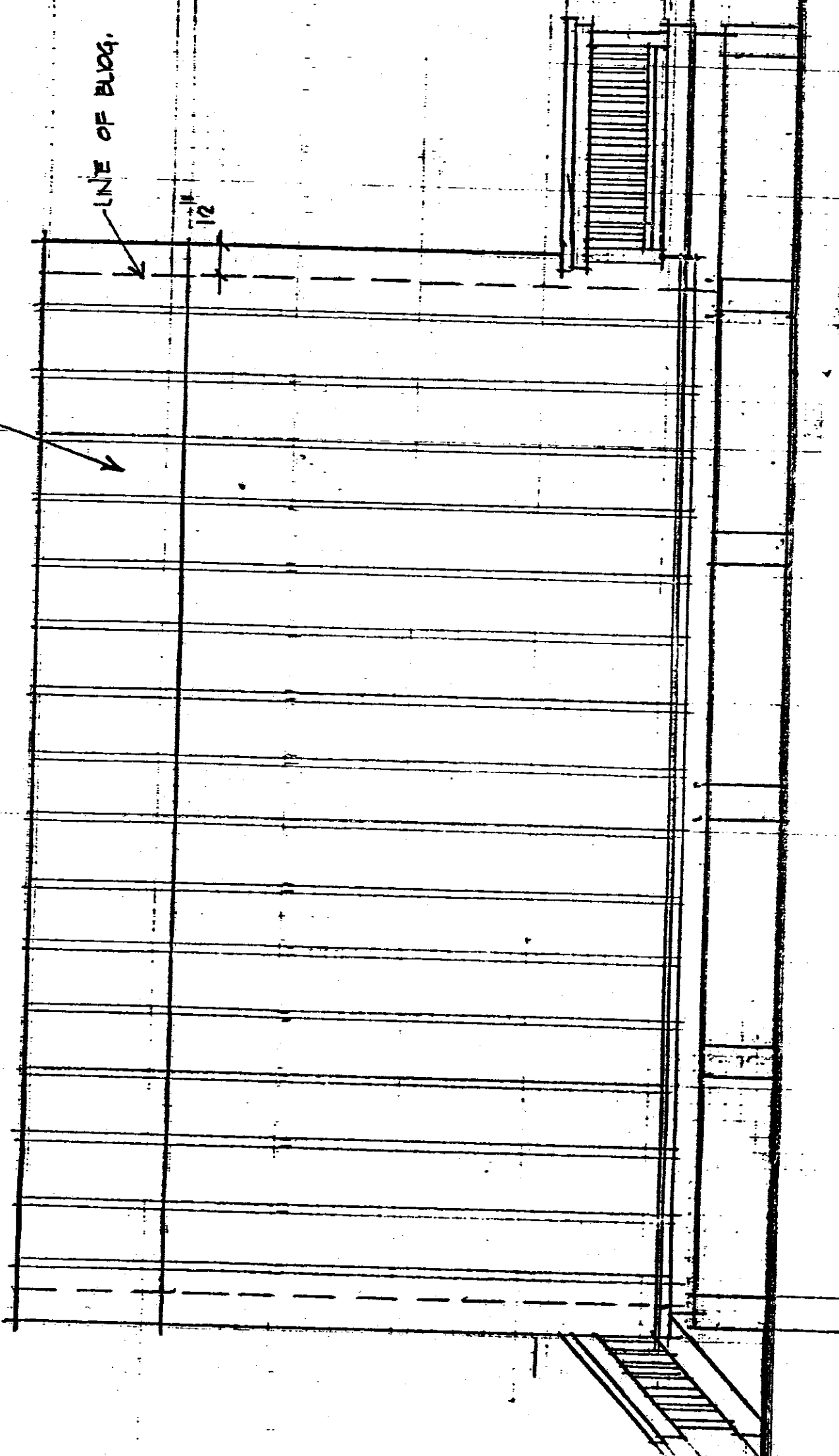
RED
LEATHER
SIDING



REAR

METAL ROOF - INSTALL PER MAP

LINE OF BLDG.



SIDE ELEVATION